



## TUTORIAL STEP BY STEP CHOCOLATE BOX



CBPM056  
Paper Pad 12x12"



CBT056  
Patterns Pad 12x12"



CBCL056  
Creative Pad A4



CBH056  
Paper Pad 8x8"



CBQE056  
Fussy Cut Pad 6x6"



# CHOCOLATE BOX

## MATERIALS

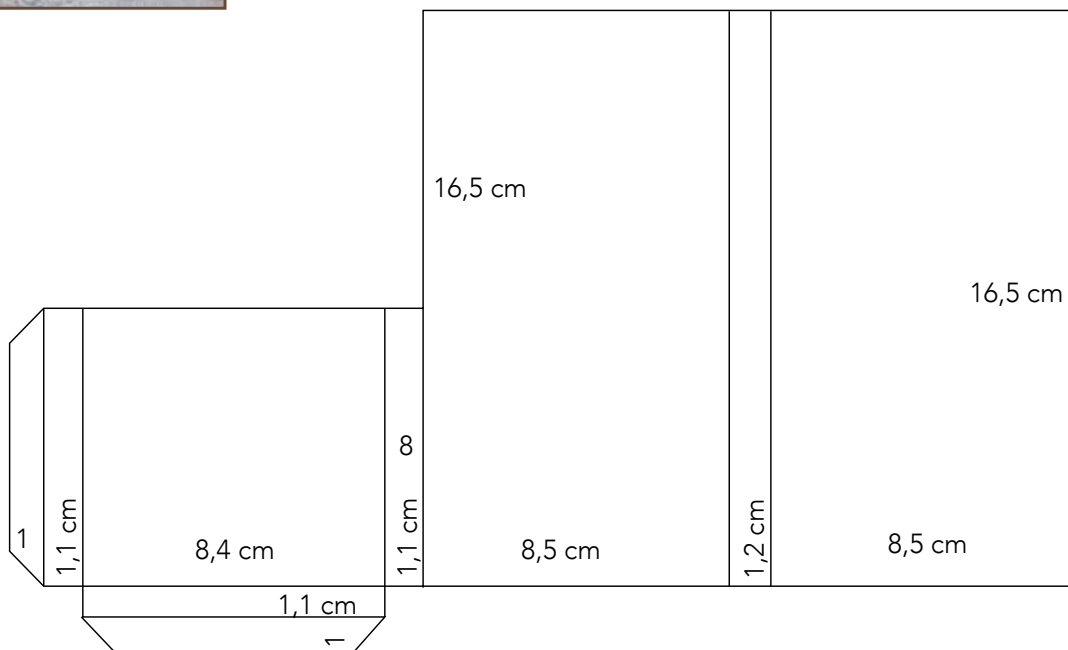
- 30x30 Patterns Pad CBT056
- Craft cardboard 30x30 cm, 200 gr
- Paper glue
- Lace
- Silk/Cotton ribbon
- Cardboard 1mm; 10x20 cm
- Double sided adhesive spacer
- Toppings: decorations of your choosing



1

Cut the craft cardboard as indicate in the model, do the binding, cut the scrapbooking card with the following mesure:

- 4 triangles 8.3x16.3 cm
- 2 stripes 1.1x16.3 cm
- 4 stripes 1x 7.8 cm
- 1 stripe 1x8.2 cm
- 1 rectangle 8.2x7.8 cm





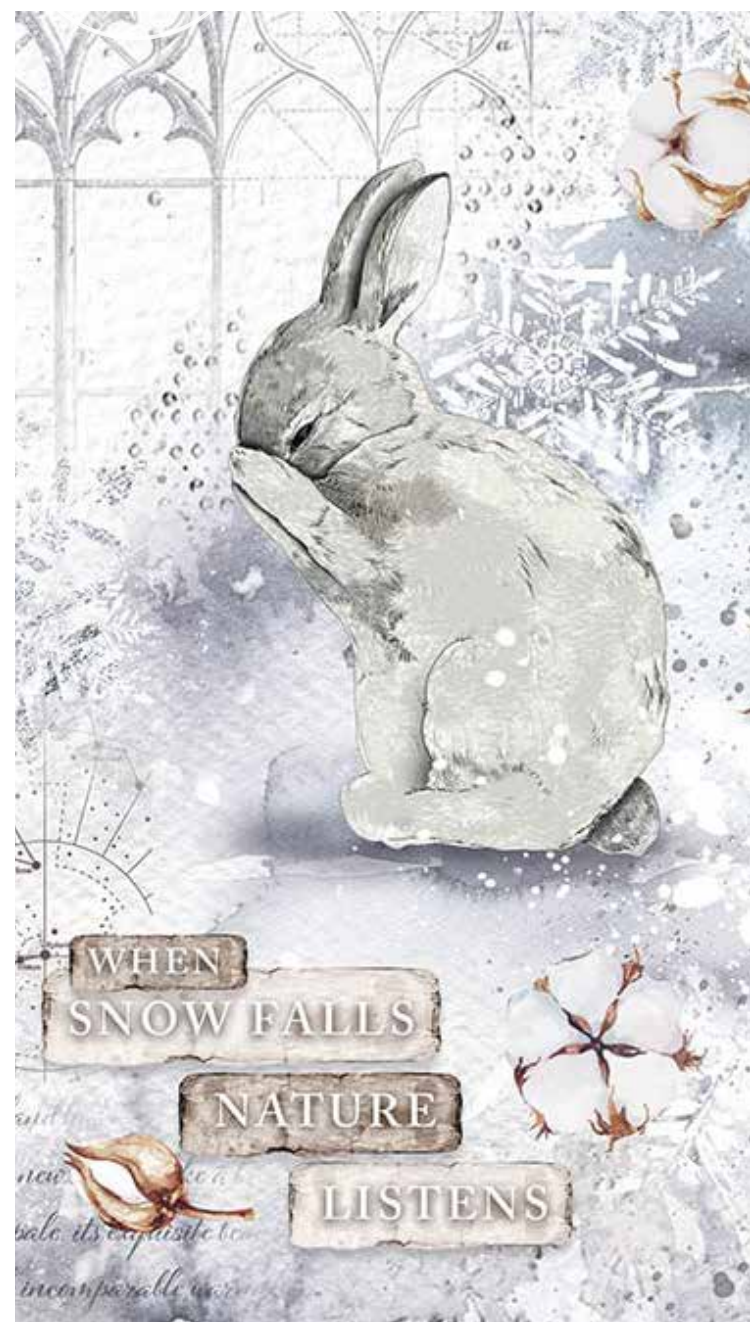
2

Glue the scrapbooking paper. Start from the outer part of the box. Place the ribbon as well (they will close the box), then glue the paper over the ribbons.



3

Close the box and glue the inner part, creating the chocolate pocket. Glue the scrapbooking paper in the inner part.





4

Prepare a frame to embellish the box. As a base, use the cardboard paper of 1 mm of thickness, measuring 8,4x16,4 cm. Cover the frame with the scrapbooking paper (18.5x10.5 cm). Fix the frame with the glue on the outer part of the box.



5

Decorate with laces and fussy cut elements. First, adorn the inner part of the frame. Glue layering lace and paper (following the scheme lace – paper – lace – paper – lace). I suggest using different type of lace in white, ivory, brown. Don't cut the paper, just rip it up.







6

Decorate with cut elements of scrapbooking paper, using doubled adhesive spacers. First, glue bigger items, then little ones. Add toppings at the end.