



CHRISTMAS
vibes



TUTORIAL STEP BY STEP
ADVENT CALENDAR



CBPM057
Paper Pad 12x12"



CBT057
Patterns Pad 12x12"



CBCL057
Creative Pad A4



CBH057
Paper Pad 8x8"



CBQE057
Fussy Cut Pad 6x6"

ADVENT CALENDAR

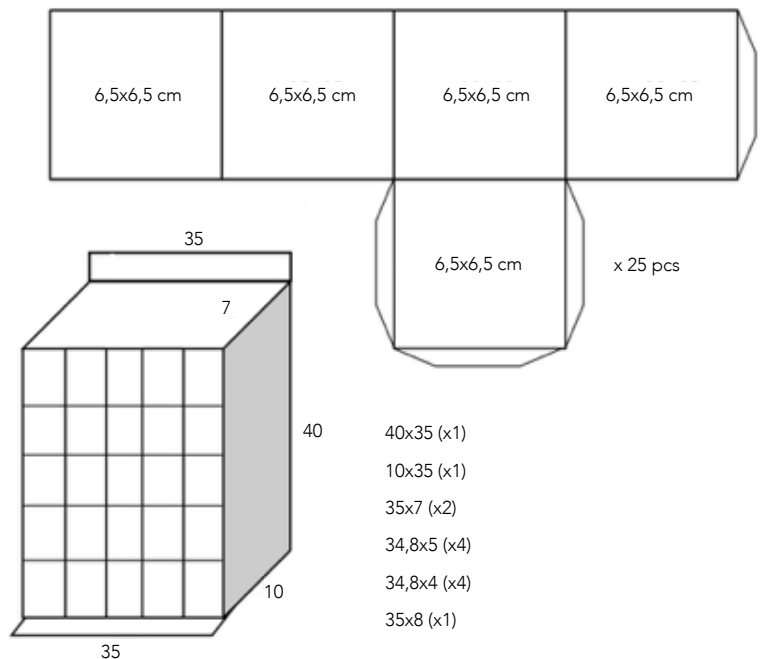
MATERIALS

- 1 Paper Pad CBPM057
- 2 Patterns Pad CBT057
- 10 craft cardboard 30x30, 200 gr
(1 cardboard for 3 boxes)
- Vinilic glue
- Silk/Cotton ribbon
- Cardboard 1 mm 35x40 cm
- Cardboard 2 mm: 10x35 (x1);
7x35 (x2); 5x35 (x4); 8x35 (x1)
35x40 cm
- Double sided adhesive spacers
- Toppings, decoration by choosing (not compulsive)



1 Cut the craft cardboard in order to create the boxes. With a 30x30 cm cardboard cm you can realize 2 boxes. Cut the material to create 25 boxes, do the binding and paste it. Drill the upper side of the outer face to easily pull out the box from the calendar.

2 Glue the scrapbooking paper with the frame number in the front side of the box. It is possible to cover the whole box, but you should calculate again the measures of the calendar, adding about 3 mm horizontally and 1 mm vertically for each box. In this calendar boxes are made only with craft cardboard, with decorations in the front face.





3

Cut the cardboard to create the base of the calendar. The back side is 40x35 cm (1 mm thickness cardboard); the lower part is 35x10 cm (2 mm thickness); the two sides are 35x7 cm (2 mm thickness); the upper side is 35x8 cm (2 mm thickness); inner horizontal parts are 34.8x5 cm, 2 mm thickness (x4); inner vertical parts are 34.8x4 cm, 1 mm thickness (x4). Cover everything with scrapbooking paper. For each cardboard item, the scrapbooking paper is cut leaving about 1 cm more for each side (to proper cover the edges and to stick the paper in the rear part).



4

Do some cuts in the inner horizontal and vertical parts. In the vertical sides do a cut every 6,8 cm of 2 mm of width and 3 cm of length: In the horizontal parts do a cut every 6,8 cm of 2 mm of width and 1 cm of length. Glue all the items, creating the inner part of the calendar.



5

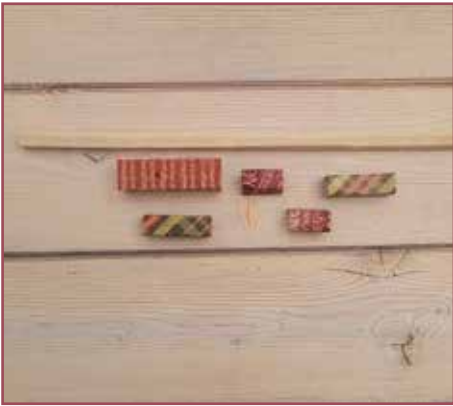
Paste the inner part of the base of 35x40 cm. Glue the upper part, the lower one and the sides.



6

Decorate the upper part of the calendar. First, choose a beautiful layout that will cover all the calendar. Glue it to an acetate paper to give more thickness and, after this passage, cut it. Paste this item to the calendar. Choose smaller elements and paste them in the front face, following the "pop-up" rule (first, with little scrapbooking paper stripes prepare parallelepipeds of different sizes, then use them as spacers, last paste other elements).







7

You can paste more scrapbooking paper stripes long the outer edges to make the calendar stronger.

